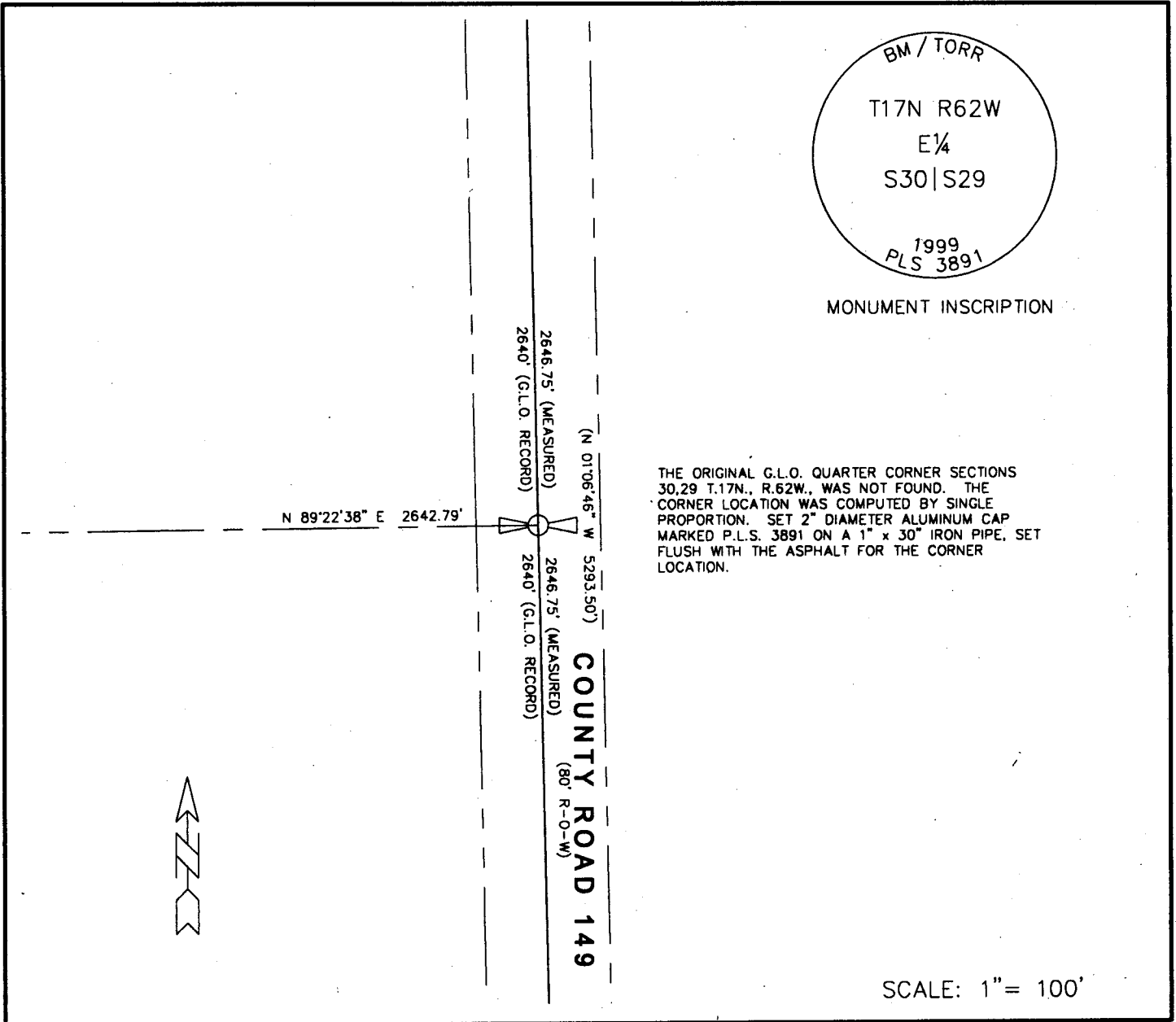


State of Wyoming Corner Record

(In compliance with the *CORNER PERPETUATION AND FILING ACT*, Wyoming Statutes, 1977, Section 36-11-101, et. seq., and the Rules and Regulations of the Board of Registration for Professional Engineers and Professional Land Surveyors)

Reverse side of this form may be used if more space is needed.

Record of original survey and citation of source of historical information (if corner is lost or obliterated). Description of corner monumentation evidence found and/or monument and accessories established to perpetuate the location of this corner. Sketch of relative location of monument, accessories, and reference points with course and distance to adjacent corner(s) (if determined in this survey). Method and rationale for reestablishment of lost or obliterated corner.



BM / TORR
 T17N R62W
 E ¼
 S30 | S29
 1999
 PLS 3891

MONUMENT INSCRIPTION

THE ORIGINAL G.L.O. QUARTER CORNER SECTIONS 30,29 T.17N., R.62W., WAS NOT FOUND. THE CORNER LOCATION WAS COMPUTED BY SINGLE PROPORTION. SET 2" DIAMETER ALUMINUM CAP MARKED P.L.S. 3891 ON A 1" x 30" IRON PIPE, SET FLUSH WITH THE ASPHALT FOR THE CORNER LOCATION.

COUNTY ROAD 149
 (80' R-O-W)

SCALE: 1" = 100'

Date of Field Work: JUNE, 1999

Office Reference: T-051762.dwg

CROSS INDEX DIAGRAM

	1	2	3	4	5	6	7	8	9	10	11	12	13	14	15	16	17	18	19	20	21	22	23	24	25
A																									
B																									
C		6			5				4					3					2						1
D																									
E																									
F																									
G																									
H																									
J																									
K																									
L																									
M																									
N																									
O																									
P																									
Q																									
R																									
S																									
T																									
U																									
V																									
W																									
X																									
Y																									
Z																									

Firm/Agency, Address

BenchMark of _____
 Torrington, P.C.
 2510 West "C" Street · P.O. Box 99
 Torrington, WY 82240
 Phone Number: (307) 532-3811

This corner record was prepared by me or under my direction and supervision.

SEAL & SIGNATURE

Professional Land Surveyor
 ROBERT W. TAYLOR
 3891
 Date: 2/22/2000
 WYOMING

Corner Name: E ¼ CORNER
 SBRPEPLS/PLSW: March 1994

Section: 30 T 17N R 62W . 6th P.M. Cross-Index No.: T-05